

# VALUEWEIGH

## EXCEL LINK

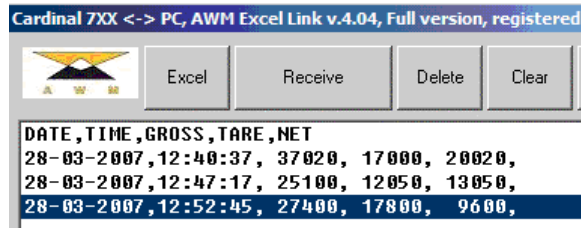


	A2	fx 28/03/2007			
	A	B	C	D	E
1	DATE	TIME	GROSS	TARE	NET
2	28/03/2007	12:40:37	37020	17000	20020
3	28/03/2007	12:47:17	25100	12050	13050
4	28/03/2007	12:52:45	27400	17800	9600
5					
6					
7					

- ◇ Copy/Move data from 7XX indicator to PC
- ◇ Use multiple indicators over TCPIP network
- ◇ Download 7XX memory in 7 minutes
- ◇ See live weight from all scales on your PC

[www.awmsoftware.com](http://www.awmsoftware.com)

Excel link is a fast and convenient way to copy weighing data from the 7XX indicator into Excel.



	A	B	C	D	E
1	DATE	TIME	GROSS	TARE	NET
2	28/03/2007	12:40:37	37020	17000	20020
3	28/03/2007	12:47:17	25100	12050	13050
4	28/03/2007	12:52:45	27400	17800	9600
5					
6					
7					

The software module stores all data downloaded from the indicator and allows this to be copied into an Excel spreadsheet with just one single click of the mouse

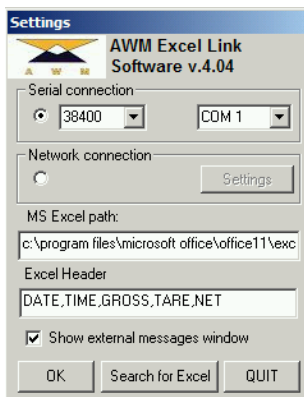
If multiple workstations are used in the system the PC module may be configured to collect data from all weighing stations.

IP ADDRESS	INCOMING PORT	OUTGOING PORT	NAME
192.168.1.102	10003	10004	ID1
192.168.1.103	10005	10006	ID2
192.168.1.102	10003	10004	ID1

Buttons: ADD, UPDATE, DELETE, SAVE

CONNECT AND EXIT

The software settings are easy to understand.



Setup provides:

- ◆ The selection of the connection type;
- ◆ The path of Excel (may be searched automatically);
- ◆ The data header editing;
- ◆ Enabling / disabling the external messages window.

If the External messages window is enabled then the Excel Link accepts additional messages from the indicator at the same time. Live data from the scales or even the operator messages from the plant may be communicated to the office.

Item	Weight
CEMENT1	31.8 KG
CEMENT2	4.6 KG
SNOWCRETE	714 KG
ASH	178 KG
STONE10	604 KG
STONE20	342 KG
SAND	81.2 KG

Button: CLOSE

For More Details Please Contact