



Valueweigh
7XXSoftware

Operation Manual and User Guide

Downloading Instructions for Smartweigh

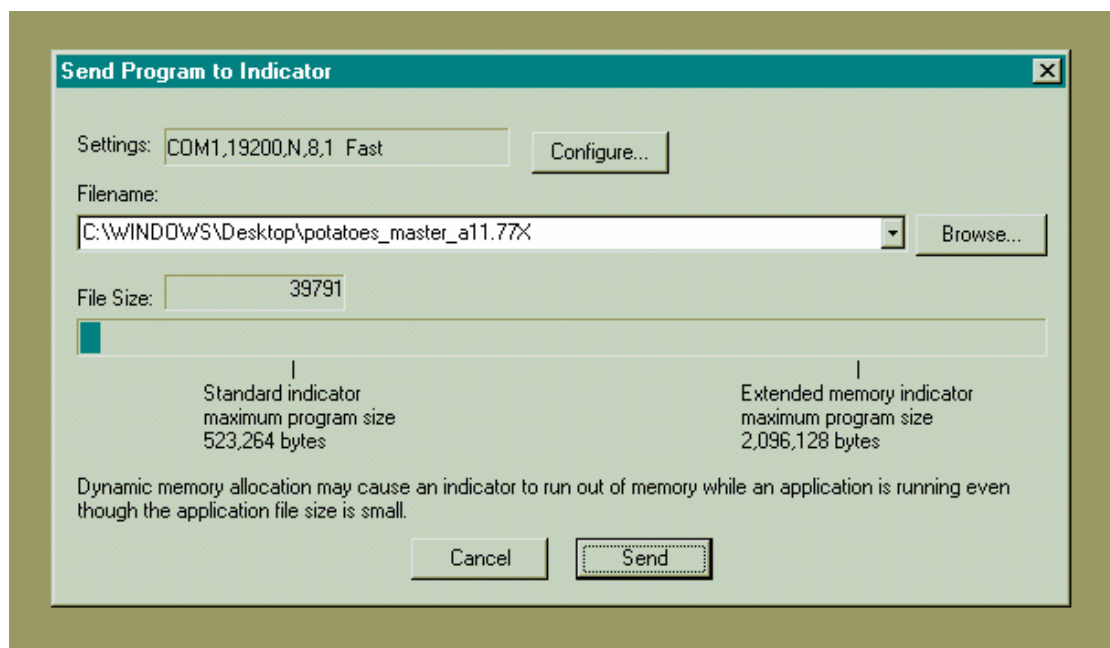
Cardinal 7XX Indicators

If you have an existing program that you are overwriting, we recommend that you test the connection between the indicator and the communication port by receiving a program from the indicator to the PC first.

1. PC Software

1. Install the program 'SMARTWEIGH 2.3' from the link supplied.
2. Restart the computer as requested then open the SMARTWEIGH program.
3. From the main screen click 'TRANSFER'
4. Click 'SEND PROGRAM OR FONT TO INDICATOR'
5. Click 'BROWSE' then select the required program from the directory in which it was saved.

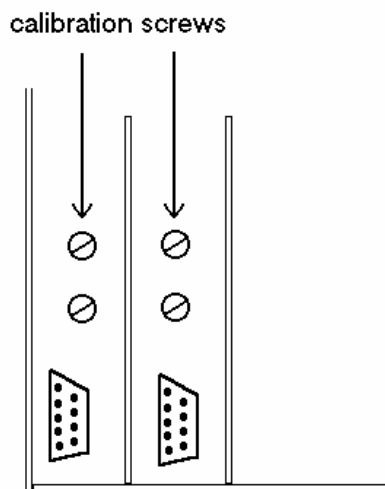
Example Smartweigh Transfer Screen



2. Indicator and PC

6. Connect the weigher and the PC together using a standard RS232 serial cable, use the port marked **RS232** on the back of the display.

7. Remove the calibration screw(s) from the back of the display.



8. Apply power to the weight indicator.

3. Indicator

9. While the start menu is displayed, press the 'NEXT' key.
10. The screen will change to the **LOAD / SEND / DSPLY** menu
11. Press the 'LOAD' key
12. The screen will display, **SELECT COM 1 OR COM 2** press the **COM 1 KEY**
13. The screen will display, **RECEIVE?.** Press **YES.**
14. The screen will display the following message

**WARNING APP WILL BE ERASED
PROCEED?
YES NO**

15. Press the **YES** key
16. After erasing the program the screen will display

**SETUP REMOTE TO SEND
PRESS -READY- TO
CONTINUE
READY**

17. Push the **SEND** key on the **PC**
18. Push the **READY** key on the **DISPLAY**
19. When the indicator has finished receiving the program, the screen will display **'DONE'**
20. Press the **OK** key to return to the **LOAD / SEND / DSPLY** menu.
21. Press the **NEXT** key twice to load and run the program.

22. Disconnect the PC from the Indicator and test the application program runs successfully.
23. Replace the calibration screws.